

Biointerfaces *International* 2021, University of Zurich, August 17-19, 2021

COVER PAGE FOR ABSTRACTS

Please choose **one category** out of the following list, where you want to place your contribution: (mandatory):

Please **register before submitting** your Abstract.

If an application for an oral contribution is rejected, we will automatically allocate a poster contribution.

In case of a rejected poster contribution, the registration fee will be refunded on request.

	Oral	Poster
My abstract is to be considered as	<input type="checkbox"/>	<input type="checkbox"/>

Categories:

- **Topic 1** Stem Cell Technology & Regenerative Medicine, Personalized Health, Gene Editing Technologies (e.g. CRISPR/Cas9)
- **Topic 2** Organoids, Organ-on-Chip, Lab-on-Chip, 3D Imaging, Verification and Validation
- **Topic 3** 3D Cell & Matrix Printing, Tissue Engineering
- **Topic 4** Mechanobiology
- **Topic 5** Nanoparticulate Systems for Diagnosis and Targeted Therapy incl. (Drug) Delivery Systems and Precision Medicine
- **Topic 6** Neuronal Interfaces, Bioelectronics and Biosensors
- **Topic 7** Artificial Intelligence, Machine Learning, Computational Modelling Approaches to Biomaterials, Biointerfaces and Biomedical Processes
- **Topic 8** Functional Material-Biology Interfaces (to Tissue, Cells, Bacteria, Enzymes/Proteins, ...), Bioinspired Responsive Surfaces, immuno-Modulatory Biointerfaces
- **Topic 9** Progress in Surface & Interface Characterization and Imaging (static/dynamic, in-situ and ex-situ), Bio-Tribology
- **Topic 10** Translational Challenges, Medical (MDR) & Regulatory Challenges

Please send your **1-page Abstract** and this cover page as a Word document for Windows or for MacOS to info@biointerfaces.ch

Abstract Format for Biointerfaces *International* 2021 (Place Your Title Here)

[W.Rieger](#)¹, [J.Lemaître](#)², [R.G.Richards](#)³

¹ Metoxit AG, Thayngen Switzerland. ² EPF Lausanne, Lausanne, Switzerland.

³ AO Research Institute, Davos, Switzerland.

INTRODUCTION: The proceedings will be electronically typeset, for publication as a supplement in the European Cells & Materials journal. Hence, abstracts **must** adhere to the following style. The required styles illustrated in this Microsoft WORD document, must be used as a template for production of abstracts, by replacing the relevant text with your own. The easiest way to use this abstract form is by cutting and pasting of unformatted text to maintain the documents present format.

METHODS: All abstracts must be formatted for only A4 paper (210 x 297 mm). The top margin should be set to 15 mm, bottom margin to 25 mm, and left and right margins to 20 mm. The entire document is set to 2 columns with 10 mm of intercolumn spacing (giving a column width of 80 mm). The body of the document should be set in 11 pt Times New Roman, justified, with single line-spacing. Do not use fonts other than Times New Roman (or Times), Symbol, and MTEExtra in the document (including equations and figures).

Title should be in bold all-caps. *Author* should be listed consecutively (as shown above) by initials and last name. Authors may be hyperlinked to the e-mail address (as shown above). *Affiliation* should be indicated with superscripted suffix Arabic numerals. Do not append degrees, professional designations, etc., to names. Affiliations should be listed consecutively and may be hyperlinked to the related web page (as shown above). Sample reference entries [1-3] are given in the References section. References should be set as one block, as below, and a maximum of four references may be used.

RESULTS: Figures should use *Figure* style and have the caption below them. Tables should use *Table* style and have the caption above them. Figure and table caption styles are *FigCaption* and *TableCaption*, respectively. Scanned figures should have a minimum resolution of 300 dpi for an 80 mm figure width. EPS or TIFF is the preferred format. Equations should use *Equation* style:

$$k(t) = \exp(-\lambda t) I(t) \quad (1)$$

and should be tab centered, with the number in parentheses on the right.

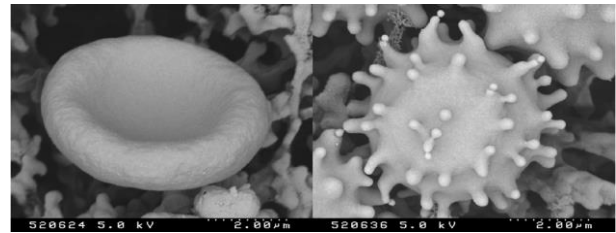


Fig. 1: Effect of stress on erythrocyte morphology: normal (happy) erythrocyte (left) vs. stressed (“bad hair day”) erythrocyte (right).

Table 1. Relative allocation and amount of resources in research.

	Amount of Resources	Allocation Freedom
Industry	high	constrained
Academic	Low	unconstrained

DISCUSSION & CONCLUSIONS: Abstracts must not exceed one page. Please submit the abstract as a Word 97/ 2000/ XP/ 2003/ 2007 document for Windows, or Word 98/ 2001 /X /2004 /2008 document for Mac. Only electronic submissions will be accepted. The abstracts may be submitted via e-mail (attachment) or post (IBM-compatible diskette or CD-ROM labelled with abstract title and corresponding author, one abstract per folder).

REFERENCES: ¹ M. Ziegler (1991) *Essentials of Writing Biomedical Research Papers*, McGraw-Hill, Inc. ² I.R. Spears, M. Pfliederer, E. Schneider, et al (2000) *J Biomech* **33**:1471-77. ³ A.R Poole, M. Alini, and A Hollander (1995) Chondrocytes and cartilage destruction in *Mechanisms and Models in Rheumatoid Arthritis* (eds B. Henderson, J. Edwards, and R. Pettipher) Academic Press, pp 163-204.

ACKNOWLEDGEMENTS: This template was modified with kind permission from European cells and Materials Conferences (<http://www.ecmjournals.org/journal/meetings.htm>)